

### APPLICATION

The 198162JA, EA, GA, and AA model transformers are used to convert line voltage to 24 Vactopower Honeywell Modutrol IV motors. The 198162JA provides 24 Vac isolation, mainly for M734 and M934 replacement motors. See Table 1. Color-coded taps on the transformer primary permit selection of 120, 208 or 240 Vac to match the power supply. See Table 2. Each assembly includes transformer and 2 transformer mounting screws. The barrier strip in the motor's wiring box separates line voltage wiring from low voltage wiring.

### INSTALLATION

#### WHEN INSTALLING THIS PRODUCT...

1. Read these instructions carefully. Failure to follow them could damage the product or cause a hazardous condition.
2. Check the ratings given in the instructions and on the product to make sure the product is suitable for your application.
3. Installer must be a trained, experienced service technician.
4. After installation is complete, check out product operation as provided in these instructions.

### CAUTION

Disconnect power supply before making wiring connections to prevent electrical shock or equipment damage.

To install transformer, refer to Fig. 1 and perform the following steps in sequence.

1. Disconnect power supply before making wiring connections to prevent electrical shock or equipment damage. All wiring must comply with local electrical codes and ordinances.
2. Remove wiring box cover screws and remove cover.
3. Place transformer in motor with plastic cover facing up and low voltage secondary (brown) leads toward motor terminals. Secure transformer with 2 screws provided.
4. Connect brown transformer leads to T1 and T2 on motor terminal strip. (If screw terminals are required on motors with quick-connect terminals, order appropriate screw terminal adapter assembly.)

TABLE 1

Transformer	Primary Voltage (Vac)
198162JA	24
198162EA	120
198162GA	220
198262AA	120/208/240

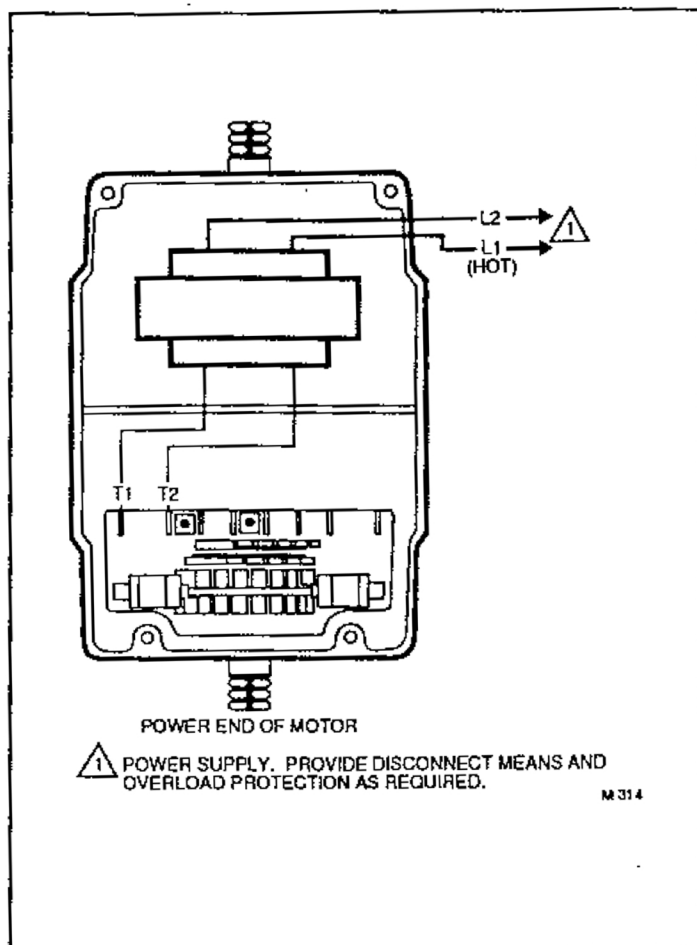


Fig. 1—Mounting 198162 transformer in Modutrol IV motor.

5. Connect power supply to proper primary leads on primary side of barrier, using wire nuts. See primary voltage color code in Tables 1 and 2.
6. Connect controller leads to proper motor terminals (see motor specifications for wiring diagrams).
7. Replace wiring box cover and secure with 4 cover screws.
8. Connect power supply and check that motor operates properly.

TABLE 2

Primary 198162AA Color Code	
Lead Color	Primary Voltage
White	120
Red/Yellow	208
Orange	240
Black	Common

All transformers have brown secondary (24 Vac) wires.

If questions arise regarding installation, operation or checkout of this product, contact your local distributor or Honeywell representative.